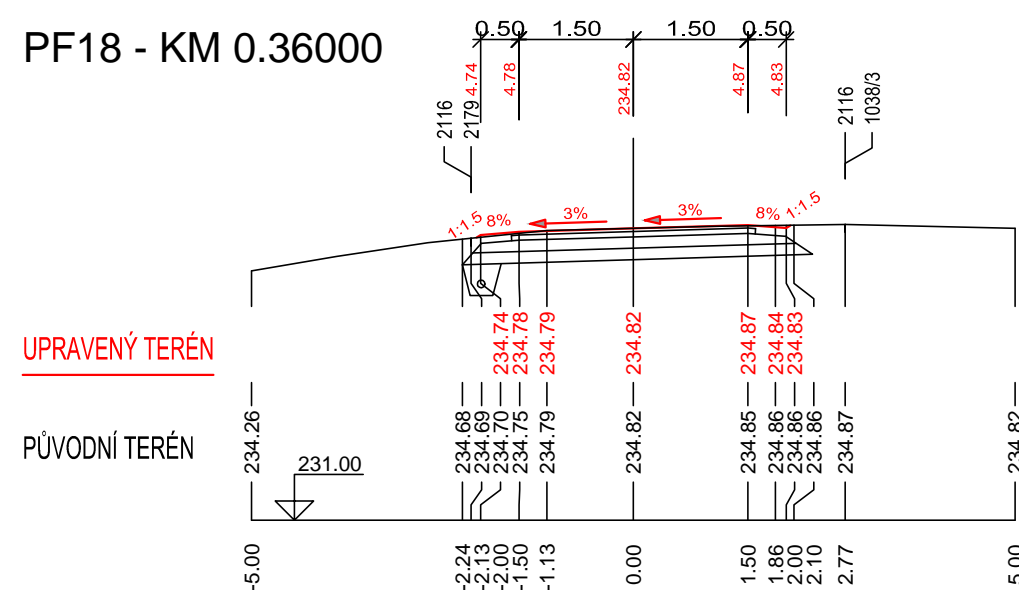
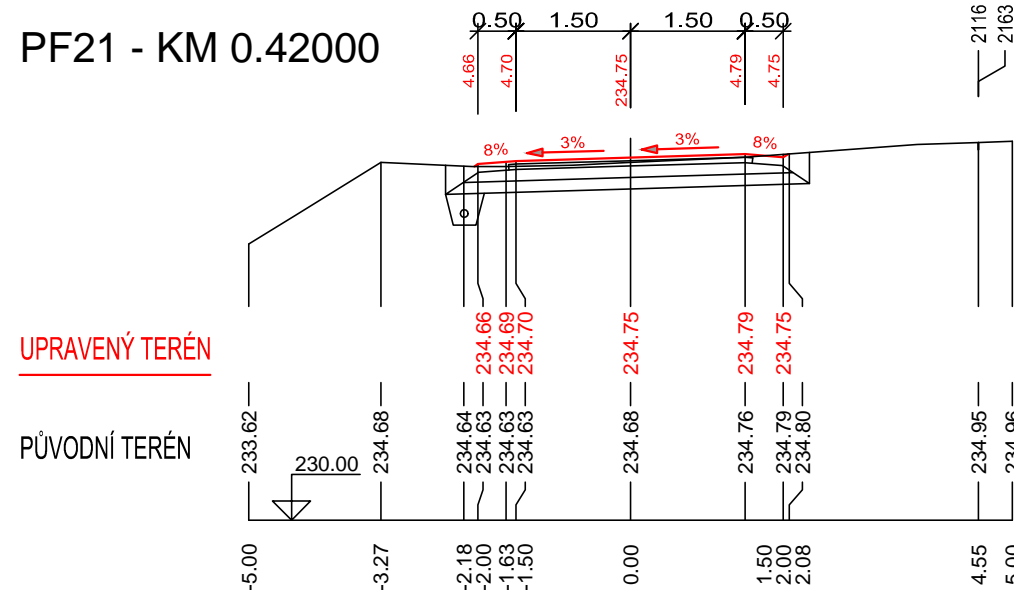


## PŘÍČNÉ ŘEZY CESTY C11 KM 0,360 - 0,557, M 1:100

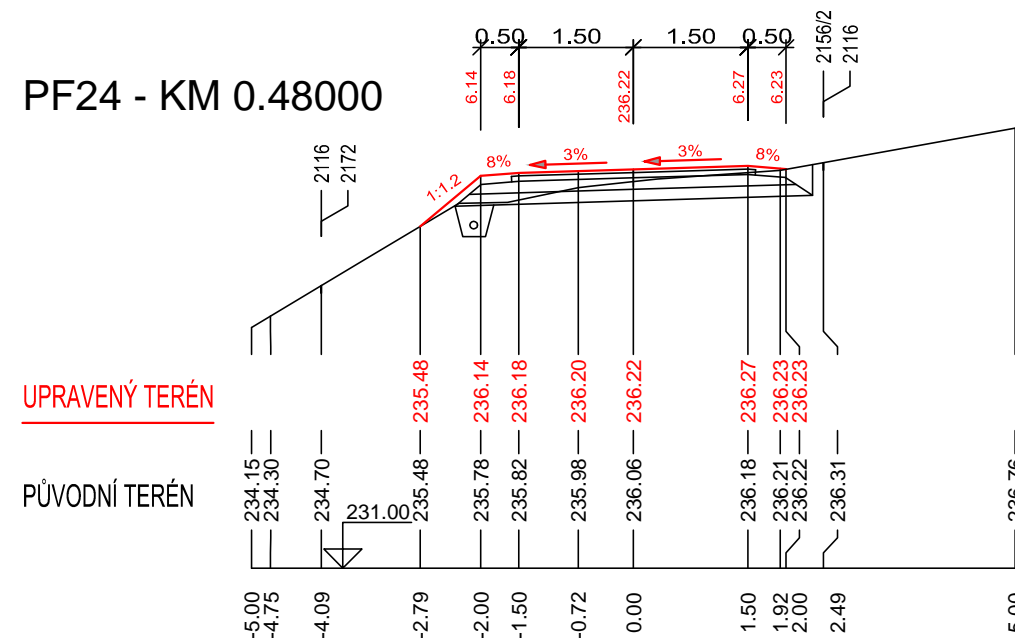
PF18 - KM 0.36000



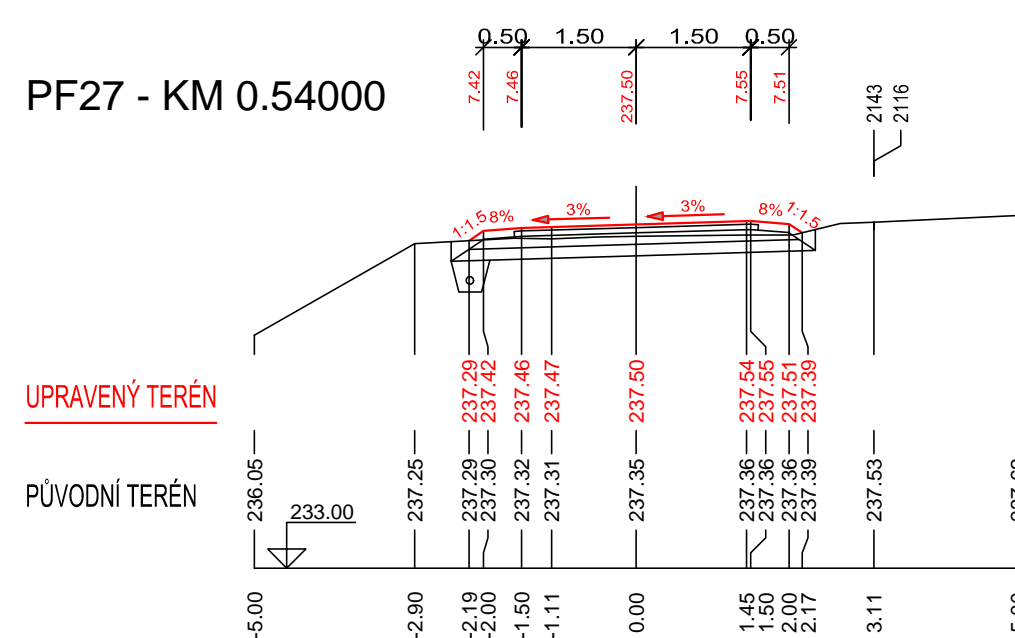
PF21 - KM 0.42000



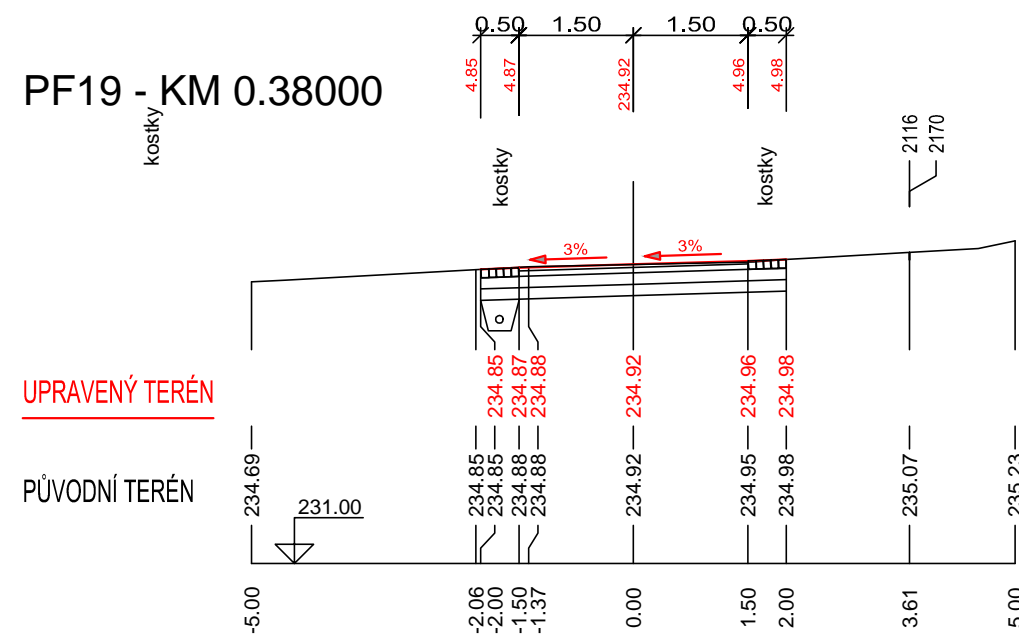
PF24 - KM 0.48000



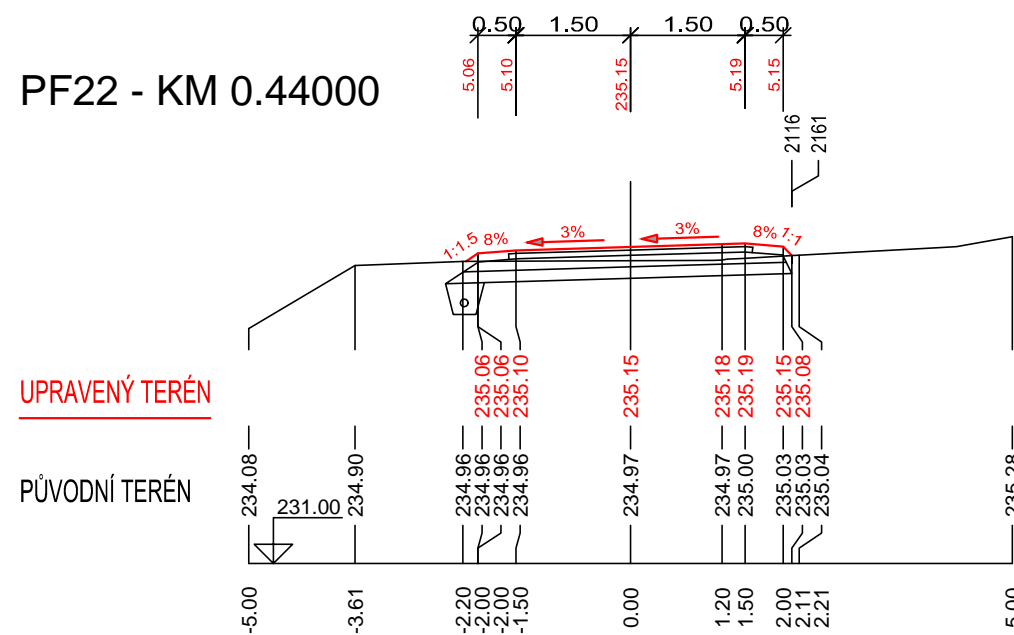
PF27 - KM 0.54000



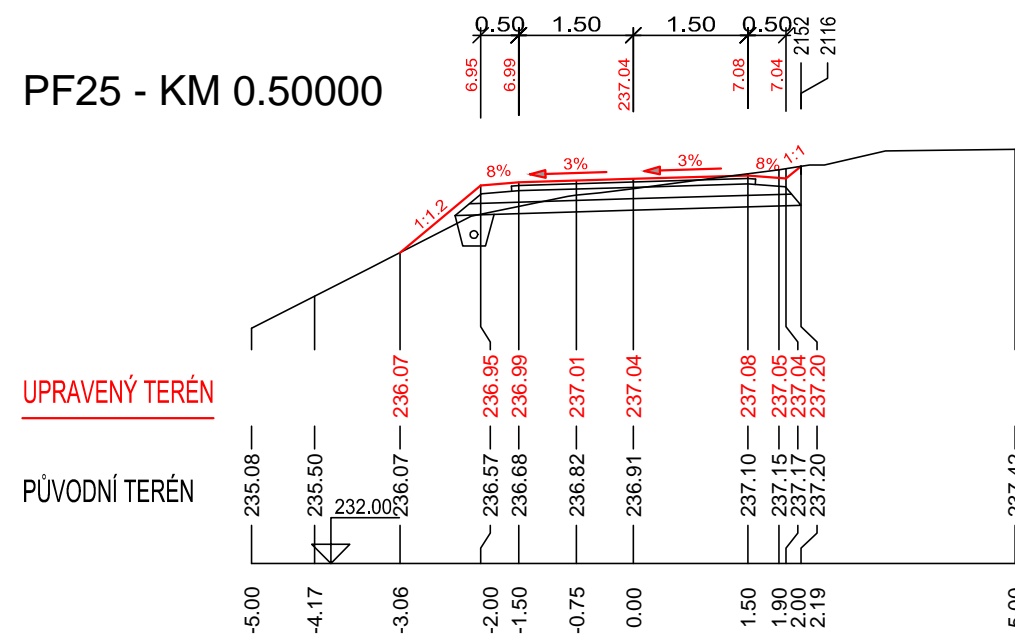
PF19 - KM 0.38000



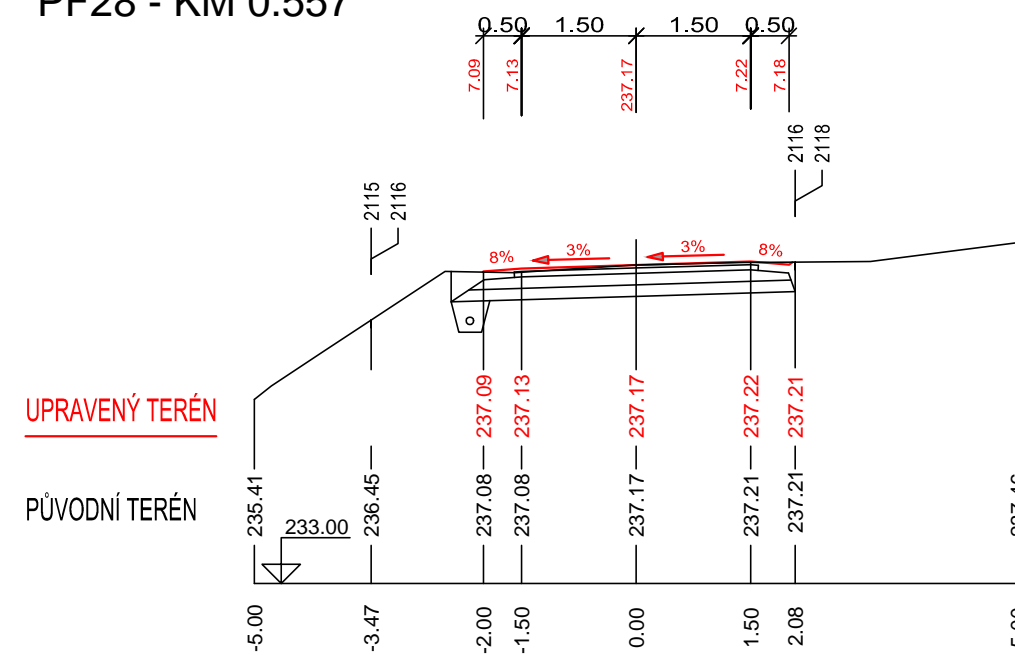
PF22 - KM 0.44000



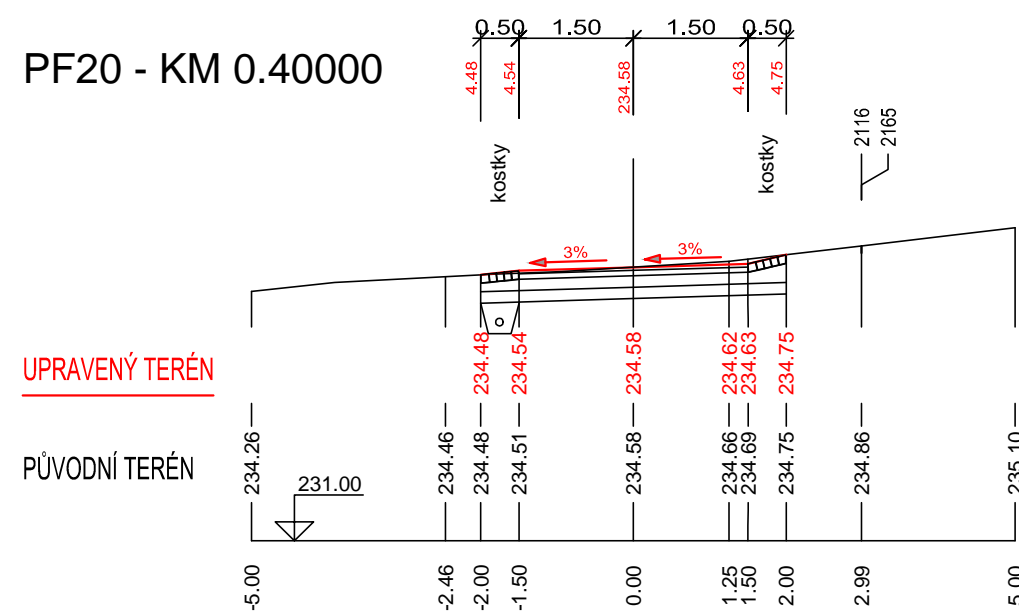
PF25 - KM 0.50000



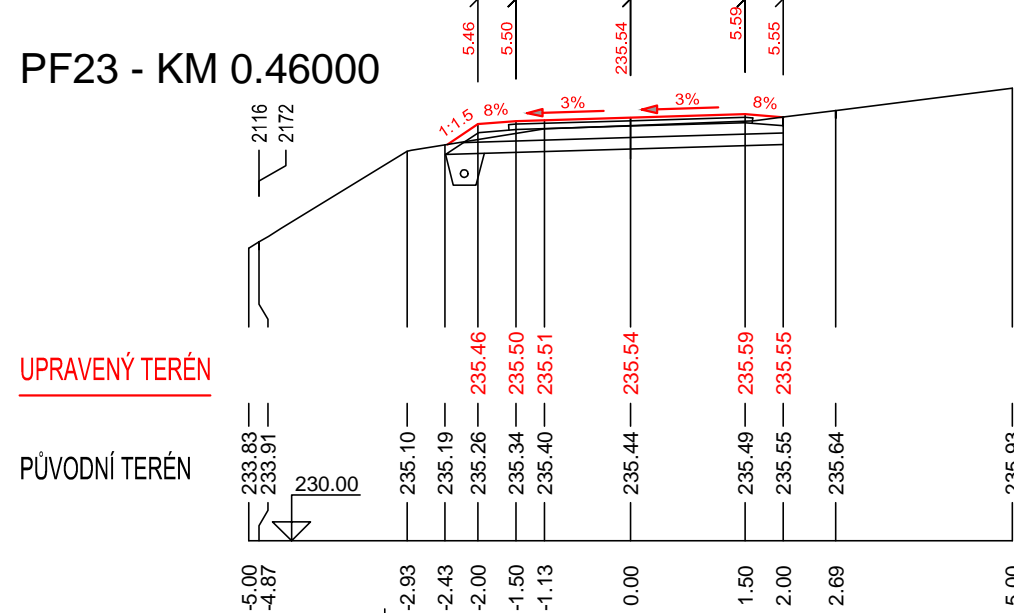
PF28 - KM 0.557



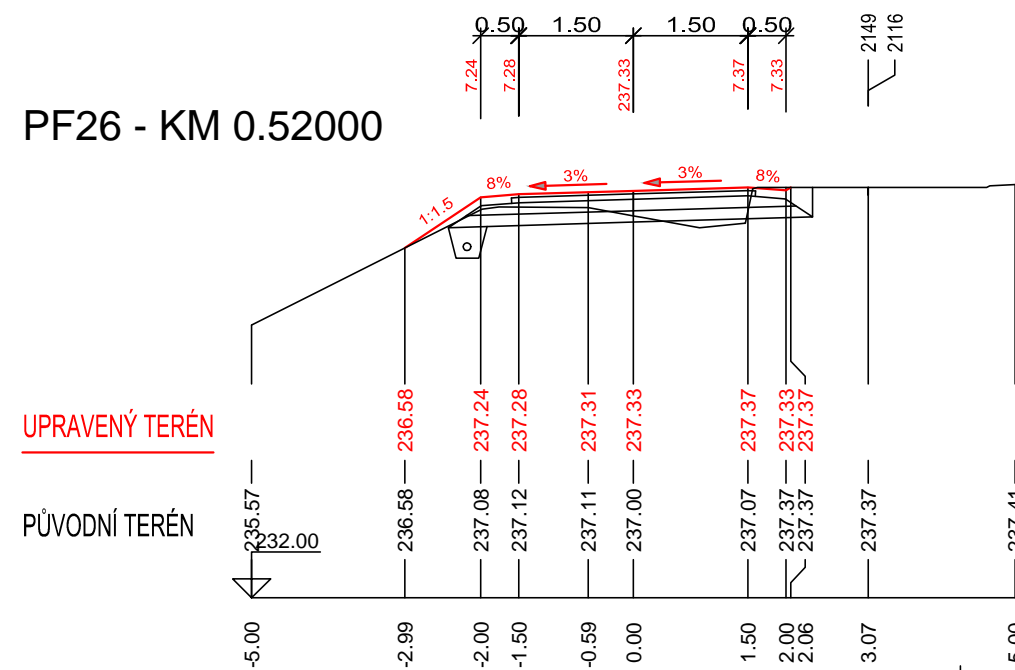
PF20 - KM 0.40000




PF23 - KM 0.46000



PF26 - KM 0.52000



VYPRACOVAL		ZODP. PROJEKTANT		VED. PROJEKTANT		 <b>vodohospodářský atelier</b> s.r.o., Růženeč 54, 644 00 Brno	
Ing. Coufalová		Ing. Coufalová		Ing. Hráček			
KRAJ	JIHOMORAVSKÝ	K.Ú.	KOSTELEČ U KYJOVA			ARCH.ČÍSLO	16/22
INVESTOR	ČR–SPÚ, KPÚ PRO JIHOMORAVSKÝ KRAJ, P. HODONÍN					DATUM	11/2022
STAVBA AKCE	POLNÍ CESTY C11, ČÁST C23 SE ZP1, C36 A C37 V K.Ú KOSTELEČ U KYJOVA SO 101 POLNÍ CESTA C11					STUPEŇ	DSP, DPS
OBJEKT						FORMÁT	3A4
OBSAH						MĚŘÍTKO	1:100
	PŘÍČNÉ ŘEZY KM 0,360 – 0,557					PŘÍLOHA Č.	PARÉ Č.
						D.1.5.	